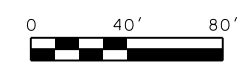
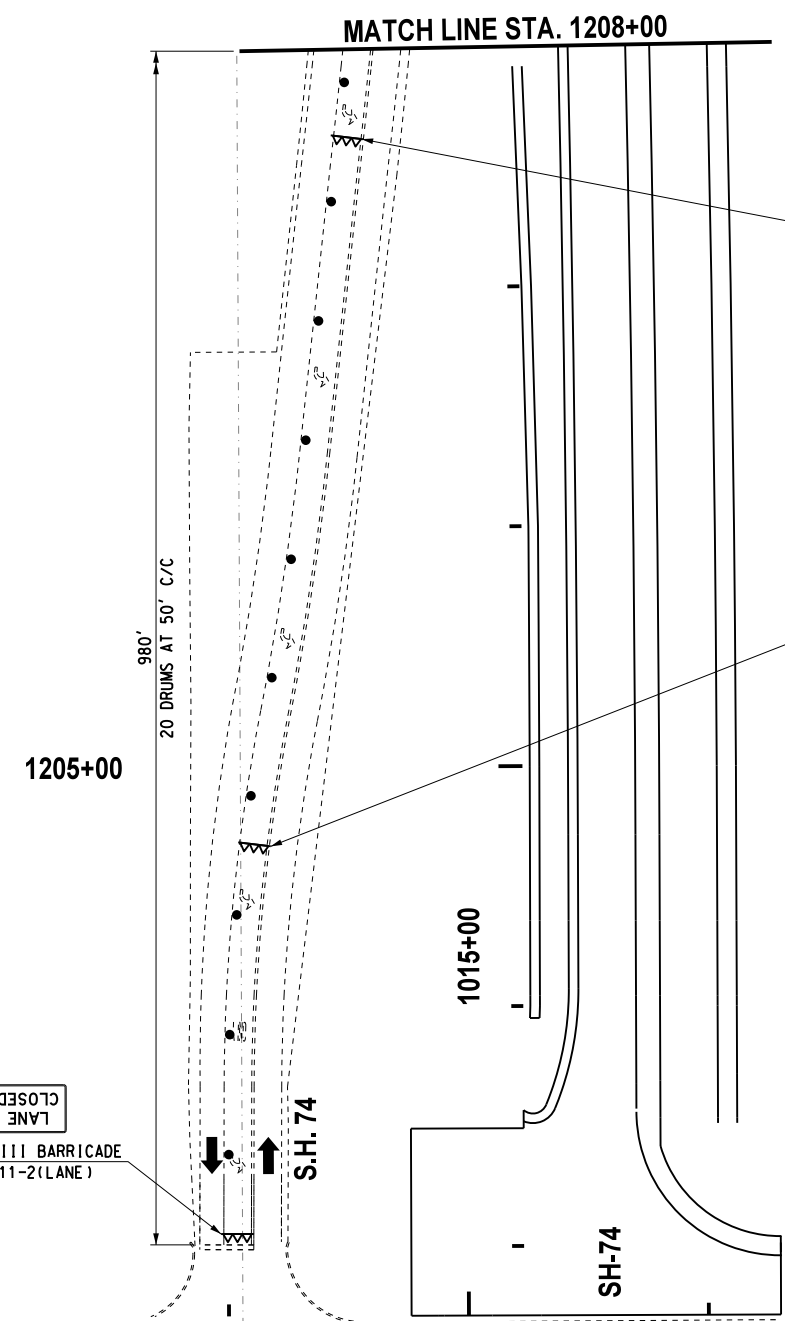


REVISIONS		
NO.	DESCRIPTION	DATE



MATCH LINE STA. 1208+00

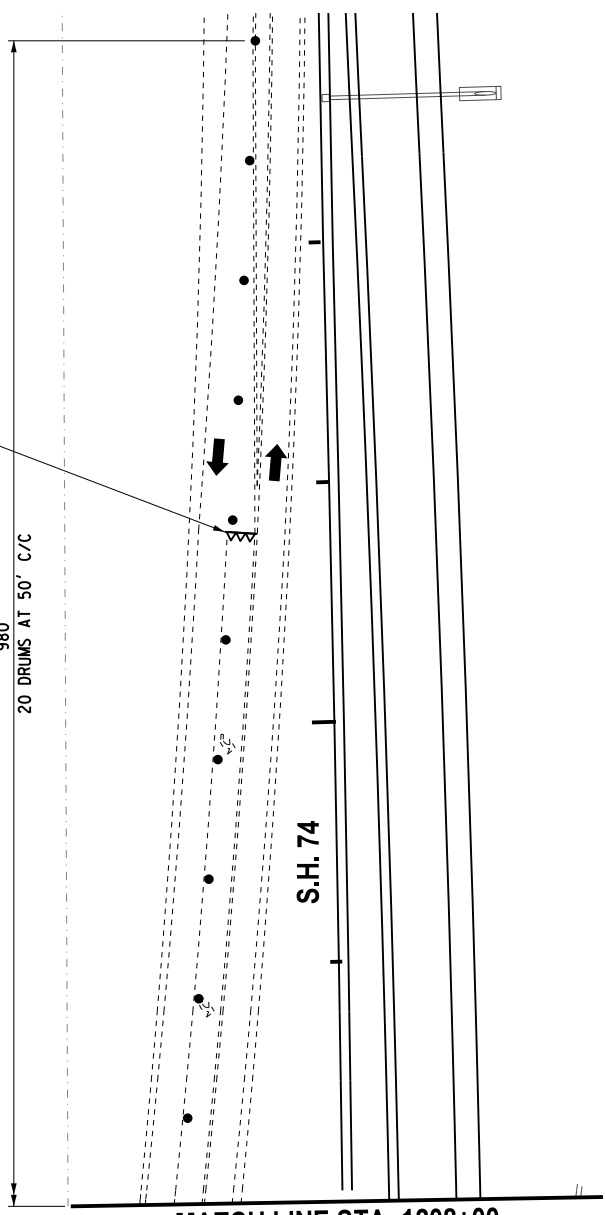


ALL PAVEMENT MARKINGS SHALL BE REMOVABLE TAPE

LANE CLOSED
(3) TYPE III BARRICADES
W/R11-2 (LANE)

1210+00

980'
20 DRUMS AT 50' C/C



CONTRACTOR TO PROVIDE ACCESS TO ALL DRIVEWAYS DURING CONSTRUCTION.

CONTRACTOR SHALL KEEP 11' MINIMUM LANES UNLESS OTHERWISE NOTED.

ROAD CLOSED TO THRU TRAFFIC
PLACE (3) TYPE III BARRICADES W/R11-4 AT THE INTERSECTION OF N.W. 206th & MAY

(3) TYPE III BARRICADE W/R11-2
ROAD CLOSED

LEGEND	
△△△	- TYPE III BARRICADE W/ TWO TYPE "A" LIGHTS
●	- DRUM
○	- CHANNELIZER CONE
—	- PORTABLE CONC. BARRIER WALL
—	- CONSTRUCTION ZONE IMPACT ATTENUATOR
■	- WORK AREA

TYPE III BARRICADE W/R11-2 (LANE)

ROAD CLOSED
(3) TYPE III BARRICADE W/R11-2

(3) TYPE III BARRICADE W/R11-4
ROAD CLOSED TO THRU TRAFFIC

SEE "TYPICAL ADVANCE WARNING SIGNS N.W. 206th ST." SHEET

N.W. 206th ST.

Design	RWR	08/10/17
Drawn	GDB	08/10/17



TRAFFIC CONTROL
PHASE 2F & 2G
N.W. 206th ST.

State Job No. 14964(08) Sheet No. 147

08/10/17 G:\Projects\1662B SH 74 @ NW 178th, NW 192nd & NW 206th\CAD\TC PHASE 2FC\NW 206th.dgn